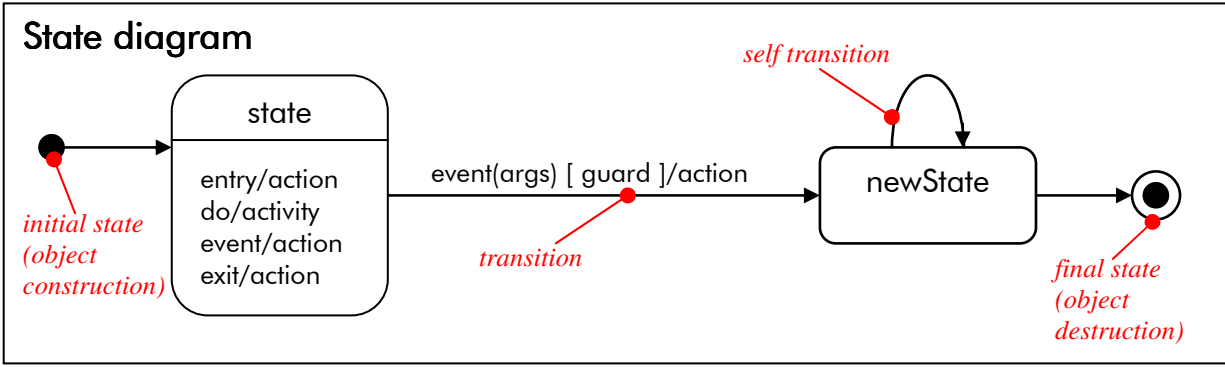
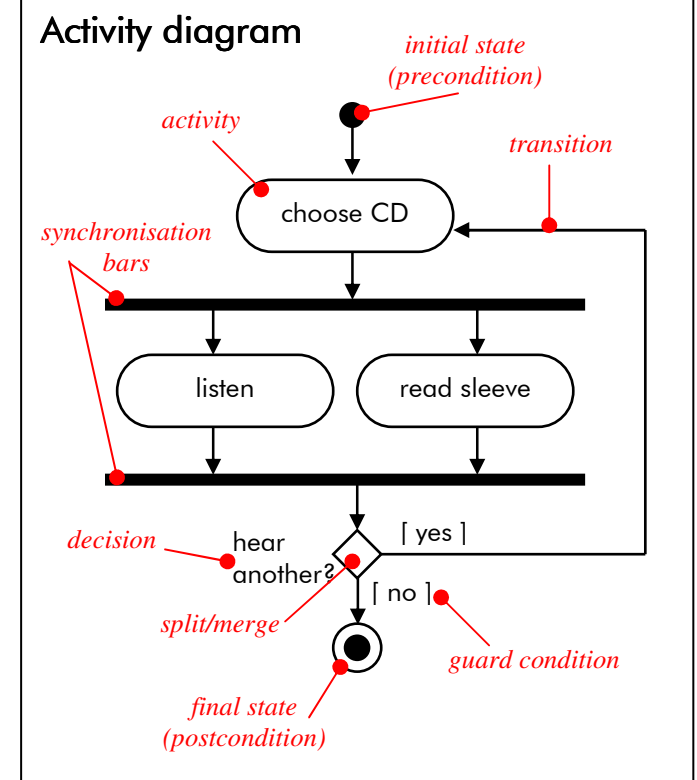
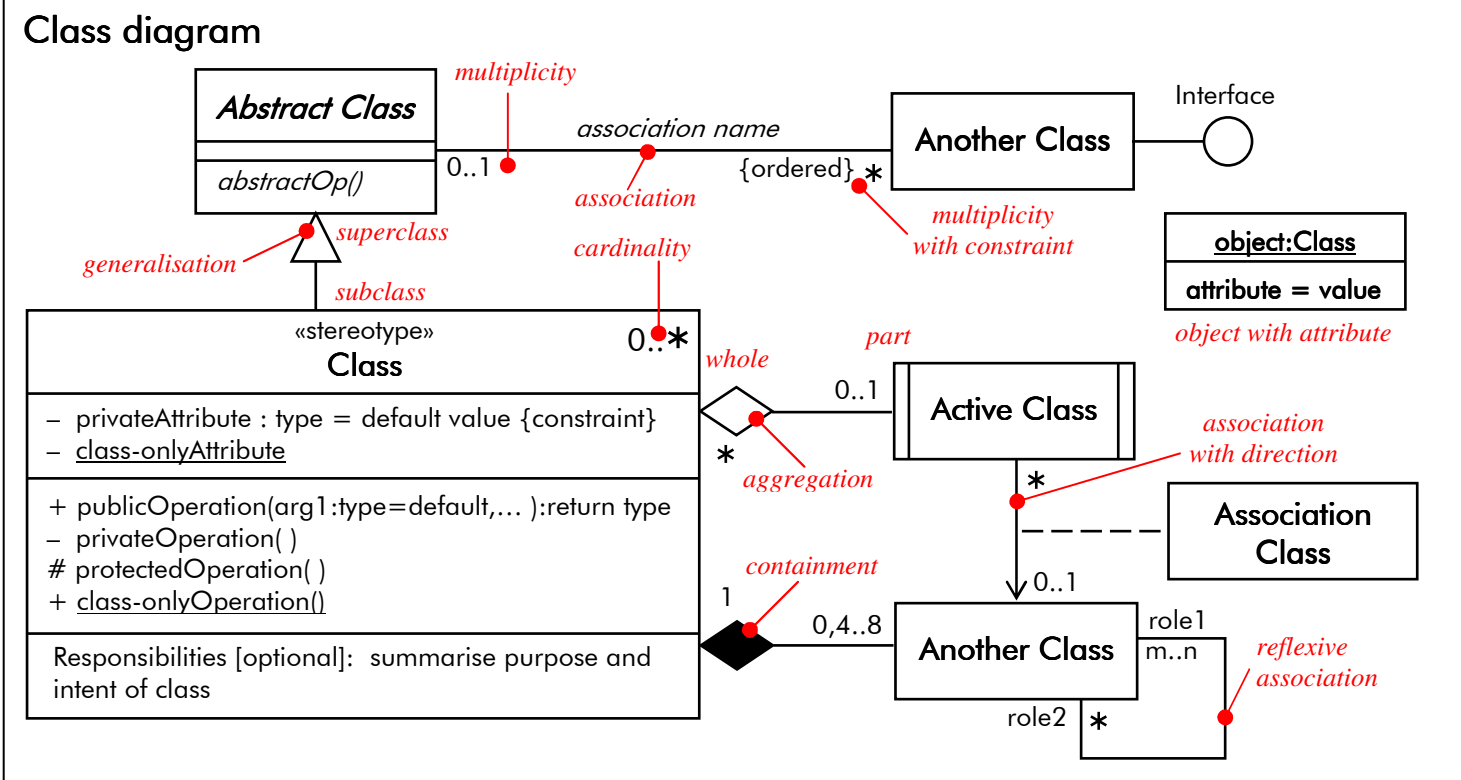
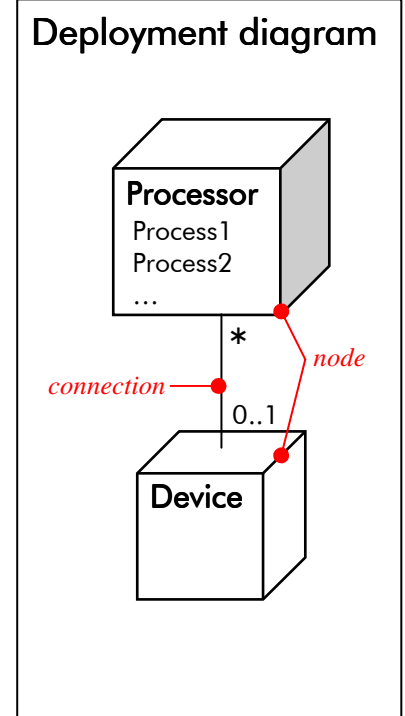
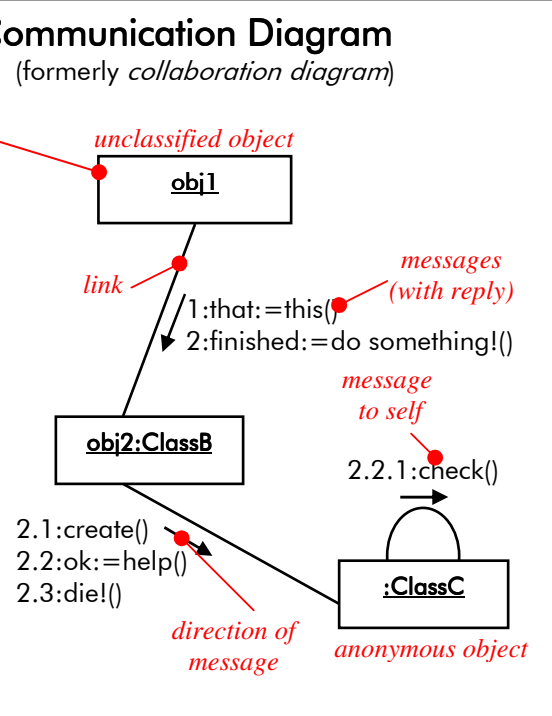
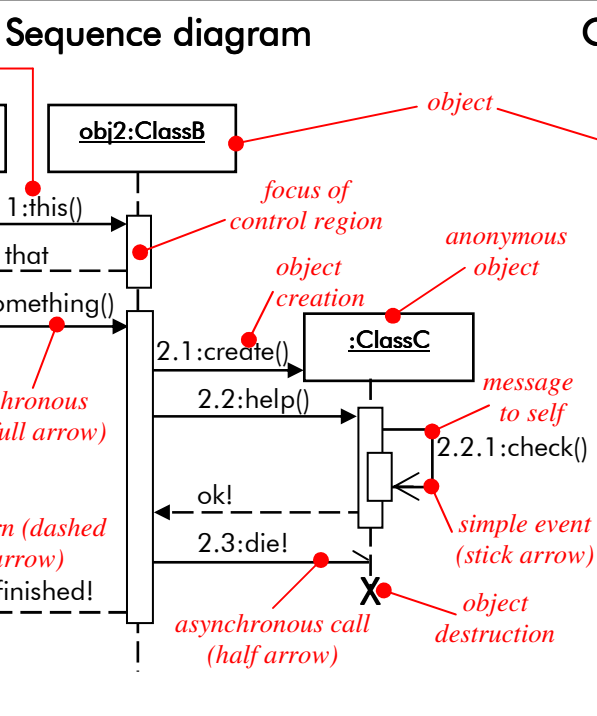


Scenario

Obj1 says this to obj2
 Obj2 says that to obj1
 Obj1 asks obj2 to do something
 Obj2 creates third object
 Obj2 asks third object to help
 Third object checks itself
 Third object says 'ok!' to obj2
 Obj2 destroys third object
 Obj2 says 'finished!' to obj1

subject - verb - object



This is a **note**, used to contain additional information. It can be free-floating, or it can be anchored to one or more diagram elements with a dotted line. Notes can be used on any UML diagram type.